



Enterprise Solutions



Accton
Making Partnership Work

Edge-core
NETWORKS[®]



ecCLOUD and Add-on

WiFi AP

IoT- WiFi Halow

Switch

SDWAN Gateway



ecCLOUD – Edgecore Cloud Controller



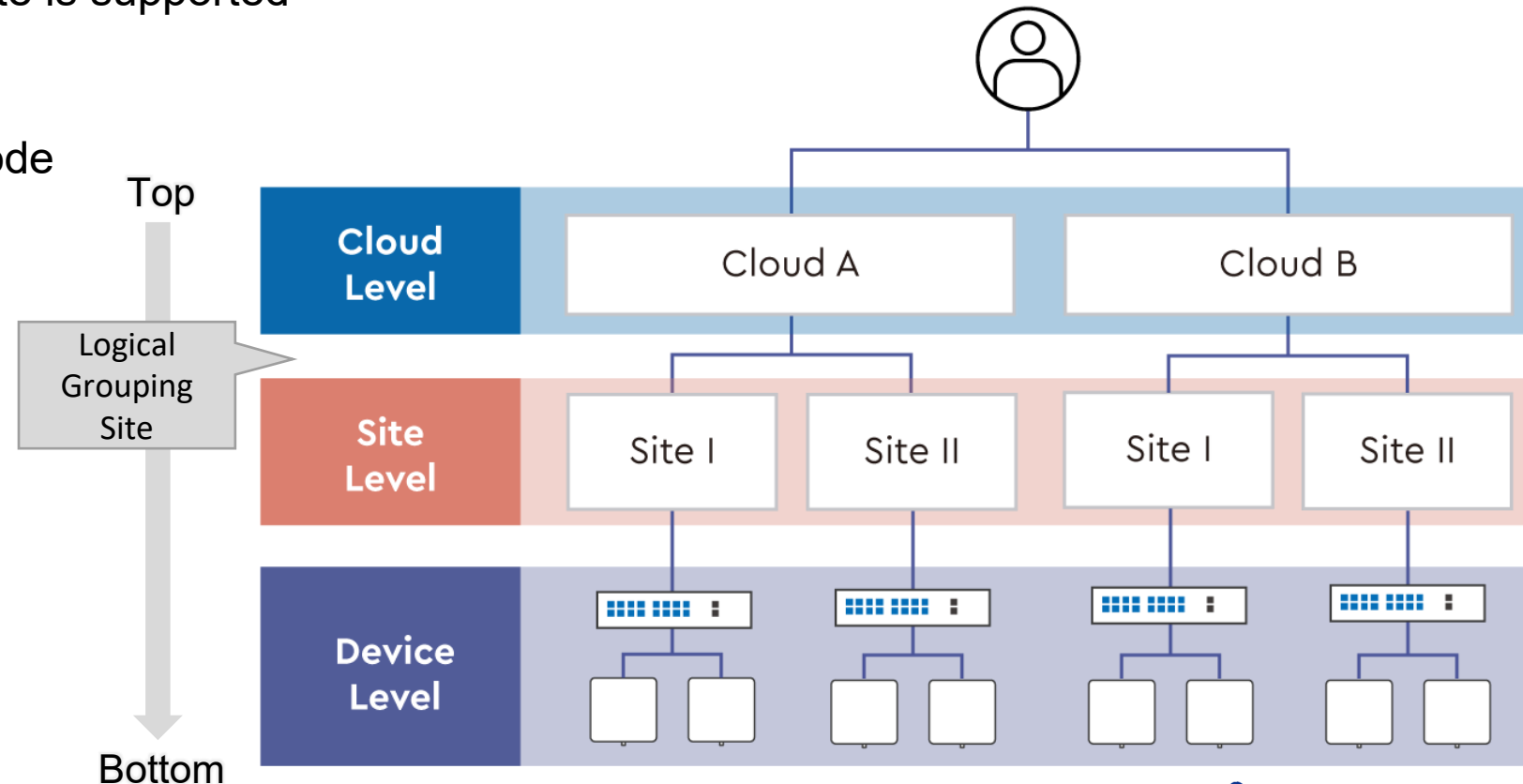
- ecCLOUD is a cloud-based controller that provides unified visibility and control for Edgecore wired and wireless devices, including AP, switch, SD-WAN, and Terragraph certified products.
- ecCLOUD simplifies the task of device deployment, management and monitoring for single site or multiple sites across different geographical locations.
 - Centralized management
 - Multi-cloud and Multi-site
 - Firmware management
 - Device provisioning
 - Custom Captive Portal
 - Logs, Report and Monitoring



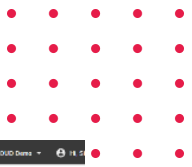
ecCLOUD Hierarchy



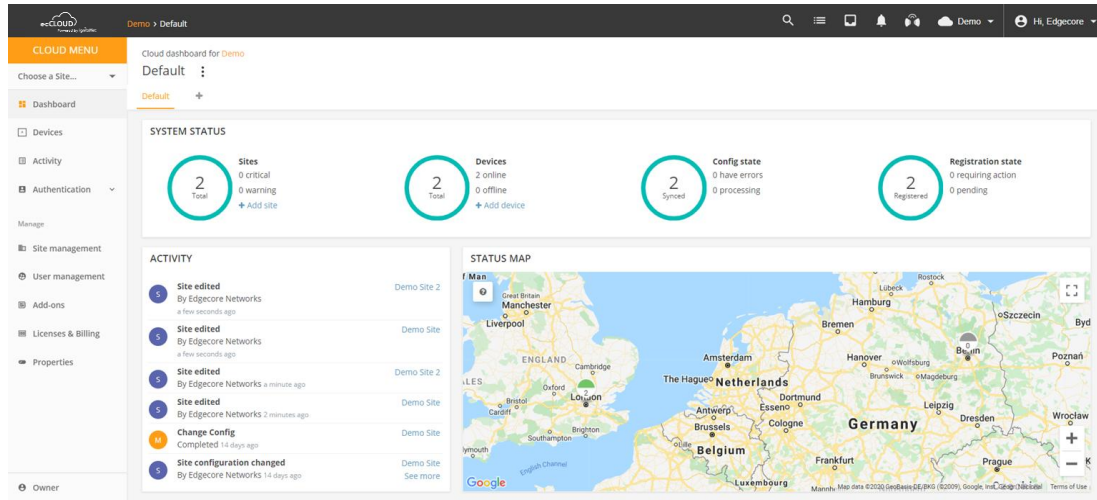
- Each site can have a distinct set of configurations, users, maps, and so on
- Each device can inherit or not inherit from the site-level settings
- Logical grouping of Site is supported
- Multitenancy
- MSP configuration mode
- Zero Touch Provision



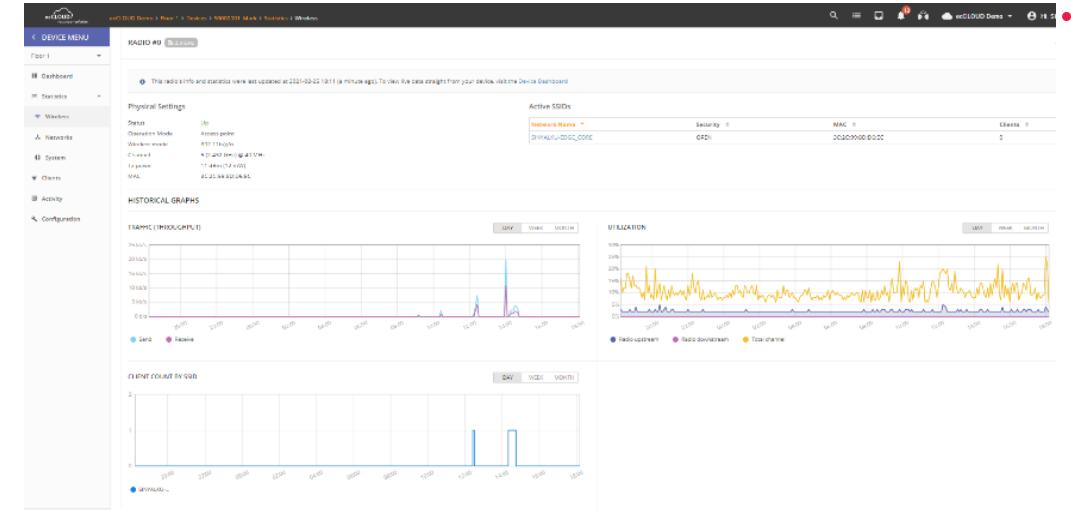
Intuitive Dashboard & Statistics



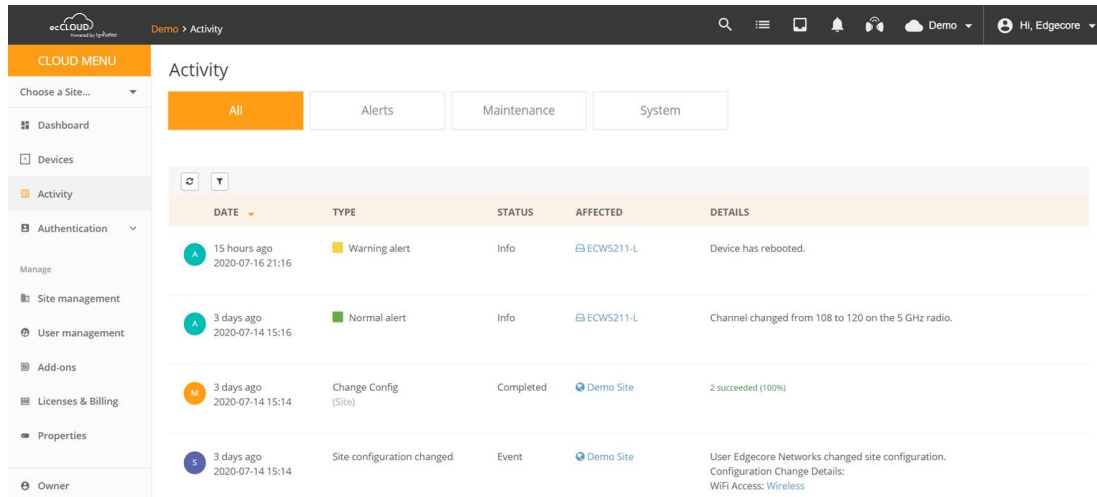
Cloud Dashboard



Wireless Client



Alerts & Notifications



Switch Port Activity



ecCLOUD-VPC Solution



Ideal for Internal Management Of Enterprises/Institutions

- ecCLOUD Name And Logo
- Fixed Domain Name
- 500 Sites Per Cloud
- 500 Devices Per Site



Ideal for MSPs/ISPs Providing Customers With Cloud-to-end Network Services

- Allow User Upload Own Company Name And Logo
- Customizable Domain Name
- 5,000 Sites Per Cloud
- 500 Devices Per Site

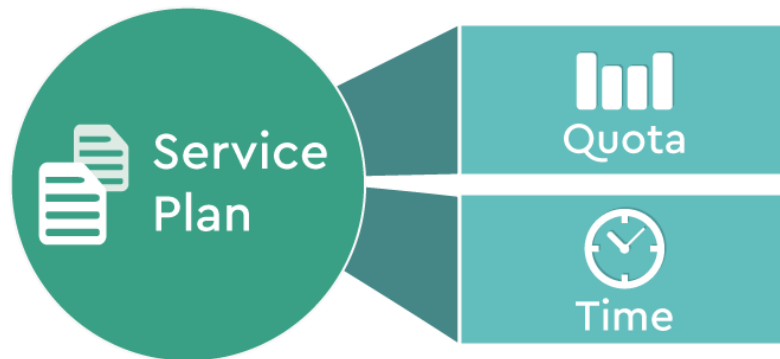
- ✓ International Public Cloud Resources – Efficient and Stable
- ✓ Synchronized Software Upgrade – Effortless Maintenance
- ✓ Intuitive User Interface – Easy to Use

AuthPort add-on



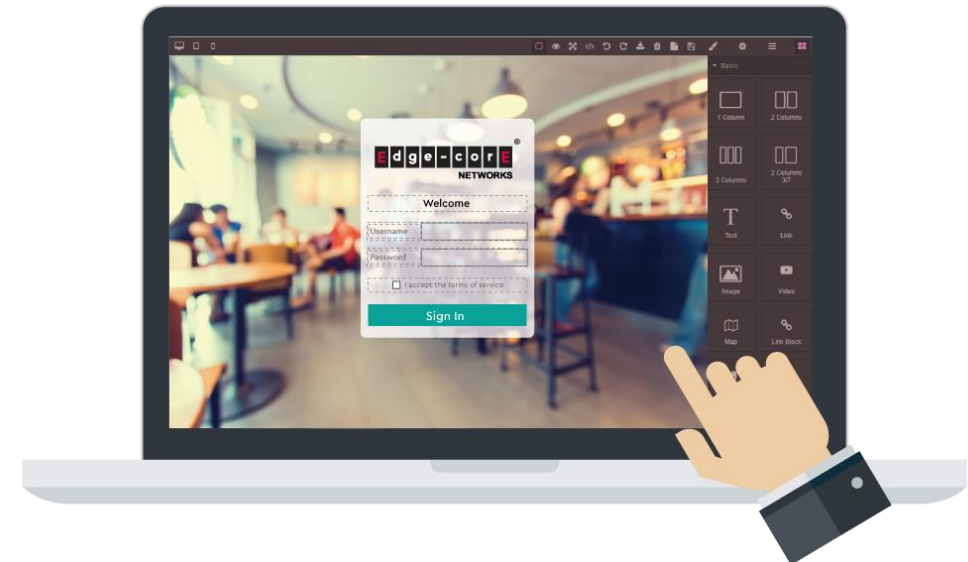
Network Access & Control

- Authentication against cloud's authentication server & account database
- Accounting to keep track of account usage
- Authorization of network access as defined by service plans



Customizable Captive Portal

- Multiple customized captive portals support
- Independent captive portal setting for each SSID



WiFi-Secure add-on

- Protect Internet access by filters out the threats like malware, ransomware, phishing, and malicious websites, the network and endpoints behind the AP will receive clean Internet traffic.
 - **Lower expenditure**
 - On-demand subscription.
 - No dedicated security appliances are needed on premise, WedgeSecure is cloud-based.
 - **Provides advanced security detection and protection**
 - multiple cloud-based security detection engines running on AI machine learning
 - real-time security intelligence support
 - support DNS Filtering and Web Filtering



AI add-on, VWE

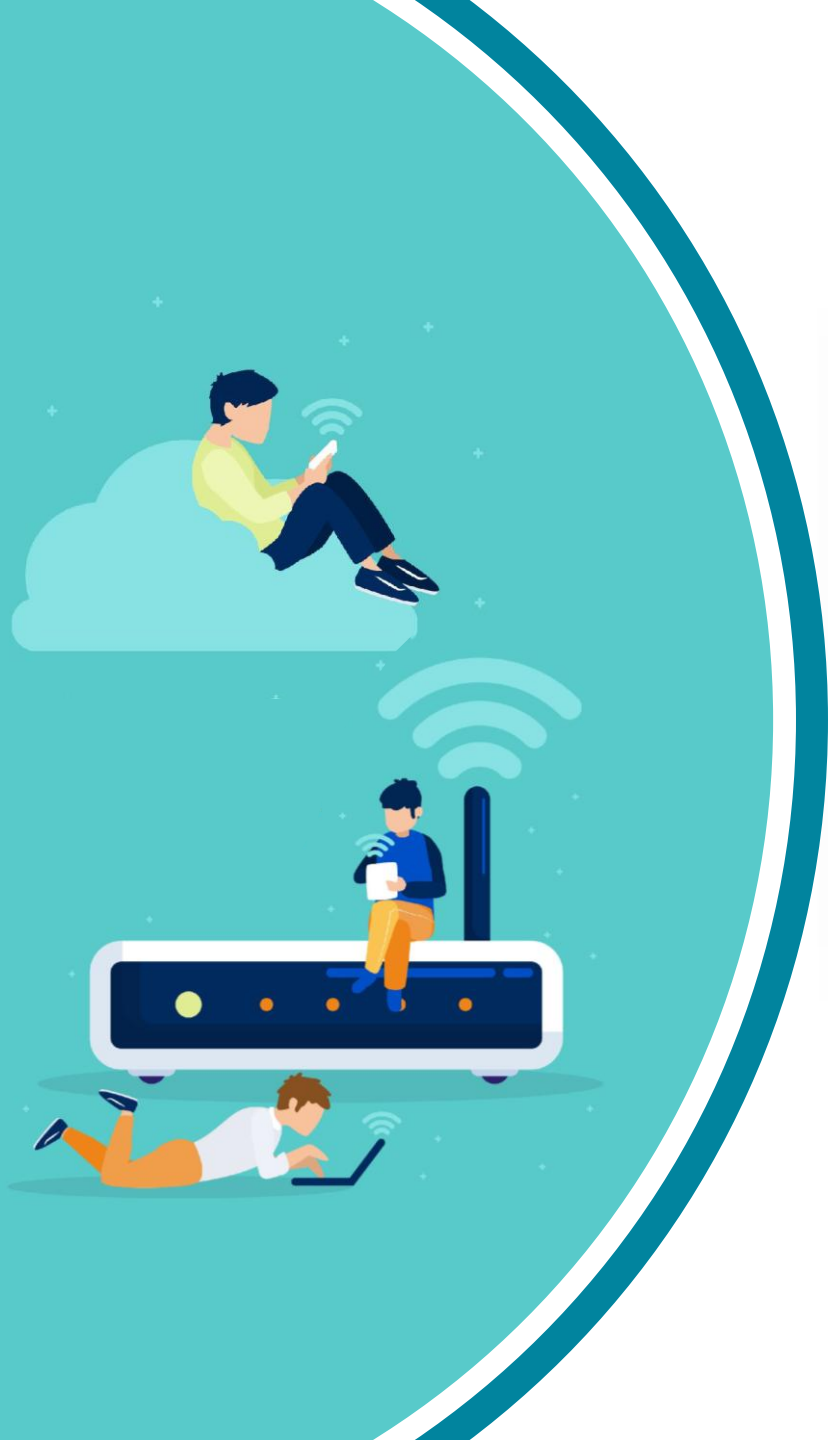
VWE AI is designed for Wi-Fi quality-of-experience (QoE) optimization purpose, it offers real-time visibility and insights, enabling users identify the issues quickly and deliver better customer service

- **QoE Measurement**
 - It provides the ability to monitor for improved connection times and assured services.
- **1-Click Root Cause Analysis**
 - Quick access to the root cause of Wi-Fi issues and take corrective action instantly
- **Actionable Insights**
 - Use data analytics to optimize the Wi-Fi network performance and maximize device's connectivity.
- **On-demand Subscription**
 - Users can decide to continue get the service or disable the service via ecCLOUD.

VWE: Virtual Wireless Expert



VWE AI, WHAT DO WE DETECT?



INTERNET (WAN)



- Throughput (Up/Down)
- Packet Drops
- Roundtrip Latency
- Usage



WiFi

Connection/Experience

- DHCP Exchanges
- EAP Failures
- Slow Connectivity
- Connection Drops
- Poor Signal
- Beacon Miss
- Steering Efficiency
- AP Stability
- Wrong Key
- Inactivity
- Radio Congestion
- WiFi Latency
- Hogging AirTime

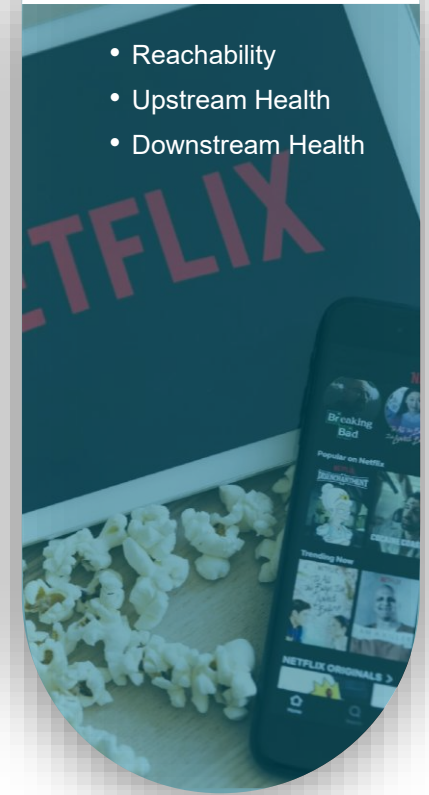
Roaming

- Poor AP Selection
- Poor Overlap
- AP Slow Response
- Sticky Client
- Slow Roaming



APPLICATION

- Reachability
- Upstream Health
- Downstream Health



Accton
Making Partnership Work

Edge-core
NETWORKS

Wireless Access Point



Wireless Access Point



- Edgecore's portfolio of indoor and outdoor wireless access points utilizes the latest in Wi-Fi standards and technology to address the needs of all types of deployments, ensuring an optimal Wi-Fi experience. Along with centralized management, advanced QoS features, and enterprise-grade security, Edgecore helps organizations minimize the risk of lost productivity and maximize cost savings.
 - Enterprise-grade AP Functionality
 - Standalone or be managed by EWS controller / ecCLOUD / ecOpen
 - Up to 16 ESSIDs per Radio
 - Optimal Client Filtering
 - Integrated Layer 2 Firewall
 - Detailed Client and Network Statistics



Wi-Fi 6 AP



EAP101

Indoor AP
2.4GHz, 5GHz
BLE / Zigbee
2x2:2 Wi-Fi 6
1 x 2.5G PoE WAN
2 x 1G LAN



EAP104

Indoor AP / Wall-plate
2.4GHz, 5GHz
BLE / Zigbee
2x2:2 Wi-Fi 6
1 x 1G PoE WAN
4 x 1G w/1 x PoE Out LAN



EAP111/111e

Indoor AP
2.4GHz, 5GHz
BLE / Zigbee
2x2:2 Wi-Fi 6
1 x 1G PoE WAN
1 x 1G LAN



EAP112

Indoor/Outdoor AP
2.4GHz, 5GHz
BLE / Zigbee
Wi-Fi HaLow
2x2:2 Wi-Fi 6
1 x 1G PoE WAN, LTE
1 x 1G LAN
IP65
-30°C to 50°C



EAP102

Indoor AP
2.4GHz, 5GHz
BLE
4x4:4 Wi-Fi 6
1 x 2.5G PoE WAN
1 x 2.5G LAN



EAP104 Lite

Indoor AP / Wall-plate
2.4GHz, 5GHz
2x2:2 Wi-Fi 6
1 x 1G PoE WAN
4 x 1G LAN



OAP101

Outdoor AP
2.4GHz, 5GHz
BLE / Zigbee
2x2:2 Wi-Fi 6
1 x 2.5G PoE WAN
1 x 1G LAN
IP66, IP68
-40°C to 60°C

Wi-Fi 7 AP

Now



EAP105

Indoor AP
2.4GHz, 5GHz, 6GHz
BLE / Zigbee
2x2:2 Wi-Fi 7
1 x 5G PoE WAN
1 x 1G LAN

Q2 2026



EAP115

Indoor AP / Wall-plate
2.4GHz, 5GHz
BLE / Zigbee
2x2:2 Wi-Fi 7
1 x 2.5G PoE WAN
1 x 1G

H2 2026



EAP106

Indoor AP
2.4GHz, 5GHz, 6GHz
BLE / Zigbee
4x4:4 Wi-Fi 7
1 x 10G PoE WAN



OAP105

Outdoor AP
2.4GHz, 5GHz, 6GHz
BLE / Zigbee
2x2:2 Wi-Fi 7
1 x 10G PoE WAN
IP66, IP68
-30°C to 60°C

H1 2027



OAP106

Outdoor AP
2.4GHz, 5GHz, 6GHz
BLE / Zigbee
4x4:4 Wi-Fi 7
1 x 10G PoE WAN
IP66, IP68
-40°C to 65°C

Plan



EAP125

Indoor AP / Wall-plate
2.4GHz, 5GHz, 6GHz
BLE / Zigbee
2x2:2 Wi-Fi 7
1 x 2.5G PoE WAN
4 x 2.5G



Wi-Fi 6 Indoor Access Point



Model Number	EAP101	EAP102	EAP104	EAP104 lite
Wi-Fi	11ax	11ax	11ax	11ax
Radios	2.4GHz, 5GHz, BLE / Zigbee	2.4GHz, 5GHz, BLE	2.4GHz, 5GHz, BLE / Zigbee	2.4GHz, 5GHz
MIMO	2x2:2	4x4:4	2x2:2	2x2:2
PoE Specification	802.3at	802.3at	802.3at/af	802.3af
Uplink Ports	1 x 2.5GbE (PoE)	1 x 2.5GbE (PoE)	1 x GbE (PoE)	1 x GbE (PoE)
LAN Ports	2 x GbE	1 x GbE	4 x GbE with 1 x PoE out (820.3af)	4 x GbE
Other Ports	1 x RJ-45 Console Port 1 x USB 2.0	1 x RJ-45 Console Port 2 x USB 2.0	1 x Pass-through Port 1 x Micro-USB Console Port	1 x Pass-through Port 1 x Micro-USB Console Port
Antenna	Built-in	Built-in	Built-in	Built-in
ESSIDs	32	32	32	32
Max. Power Consumption	22.4 W	25 W	12.9W	12.9W
Mounting	Wall / Ceiling / T-bar mount	Wall / Ceiling / T-bar mount	Wall-plate / Wall mount / desktop (optional stand)	Wall-plate / Wall mount / desktop (optional stand)
Dimensions (H x W x D; cm)	19.5 x 19.5 x 3.9	20.1 x 19.5 x 4.1	16.05 x 8.95 x 3.4	16.05 x 8.95 x 3.4
Weight	0.42kg	0.61kg	0.45 kg	0.45 kg



Accton
Making Partnership Work



Wi-Fi 6 Indoor / Outdoor Access Point



Model Number	EAP111/ EAP111e
Wi-Fi	11ax
Radios	2.4GHz, 5GHz, BLE / Zigbee
MIMO	2x2:2
PoE Specification	802.3at
Uplink Ports	1 x GbE (PoE)
LAN Ports	1 x GbE
Antenna	Built-in
ESSIDs	32
Max. Power Consumption	21.4W
Mounting	Wall / Ceiling / T-bar mount / Pole mount (optional)
IP Rating	IP55
Dimensions (H x W x D; cm)	17 x 18.5 x 3.945
Weight	0.63 kg



Accton
Making Partnership Work



Wi-Fi 6 Indoor / Outdoor IoT Access Point



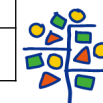
Model Number	EAP112
Wi-Fi	11ax
Radios	2.4GHz, 5GHz, BLE / Zigbee, Wi-Fi HaLow, LTE
MIMO	2x2:2
PoE Specification	802.3at
Uplink Ports	1 x GbE (PoE)
LAN Ports	1 x GbE
Wi-Fi Antenna	Built-in
ESSIDs	32
Wi-Fi HaLow	1 x external antenna
LTE	Cat 6, 2 x external antenna
Mounting	Wall / Ceiling / Pole mount (optional)
IP Rating	IP65
Operating Temperature	-30°C ~ 50°C
Dimensions (H x W x D; cm)	19.5 x 21 x 3.945



Wi-Fi 6 Outdoor Access Point



Model Number	OAP101
Wi-Fi	11ax
Radios	2.4GHz, 5GHz, BLE
MIMO	2x2:2
GPS	Yes
PoE Specification	802.3at
Uplink Ports	1 x 2.5GbE (PoE)
LAN Ports	1 x GbE
Other Ports	1 x RJ-45 Console Port / 1 x Vent
Antenna	Built-in Omni with down-tilt 20° (2.4GHz, 5GHz) Built-in Omni (BLE)
ESSIDs	32
Max. Power Consumption	21.2W
Mounting	Pole / Wall mount
IP Rating	IP68
Operating Temperature	-40°C ~ 60°C
Dimensions (H x W x D; cm)	28.34 x 29.34 x 7.1
Weight	1.725 kg



Accton
Making Partnership Work



Wi-Fi 7 Indoor Access Point

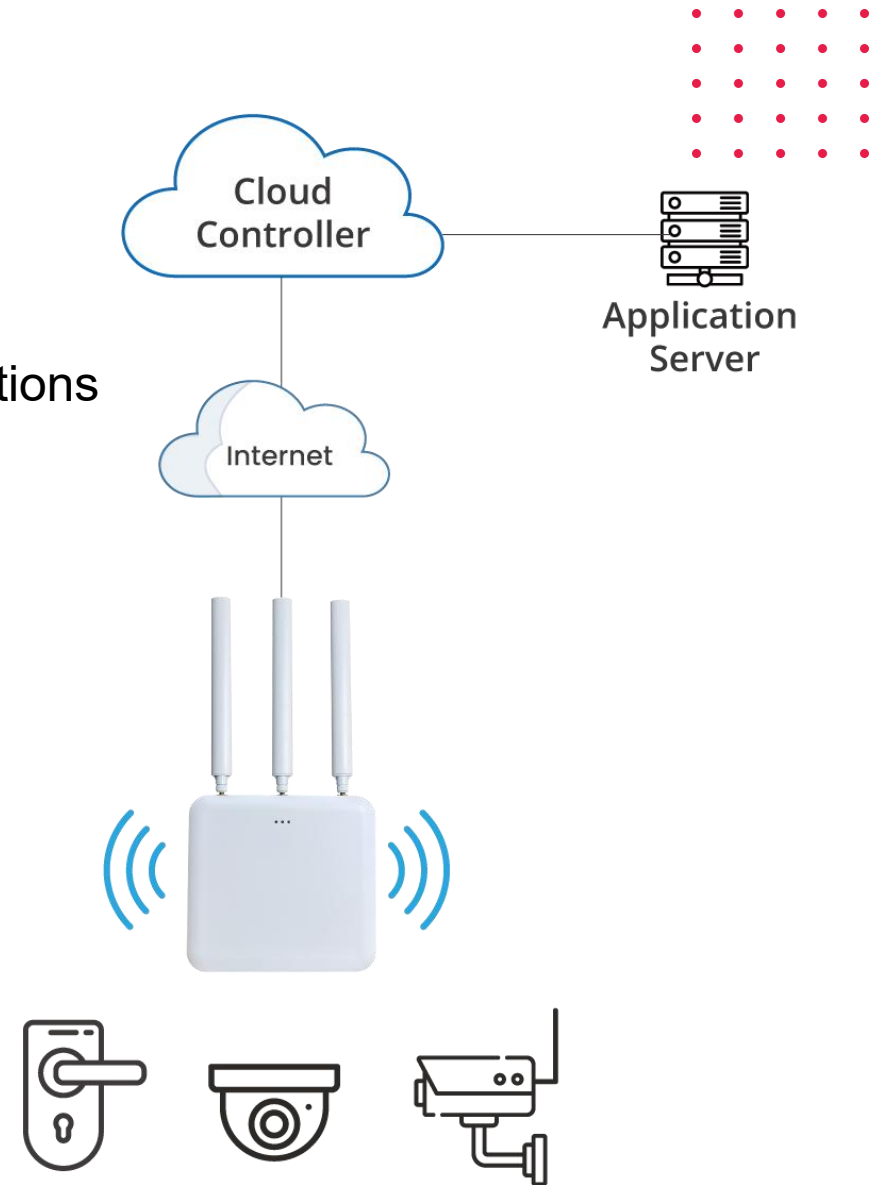


Model Number	EAP105	EAP115
Wi-Fi	11be	11be
Radios	2.4GHz, 5GHz, 6GHz, BLE / Zigbee	2.4GHz, 5GHz, BLE / Zigbee
MIMO	2x2:2	2x2:2
PoE Specification	802.3at	802.3af
Uplink Ports	1 x 5GbE (PoE)	1 x 2.5GbE (PoE)
LAN Ports	1 x GbE	1 x GbE
Antenna	Built-in	Built-in
ESSIDs	32	32
Max. Power Consumption	25W	12.5W
Mounting	Wall / Ceiling	Wall / Wall-Plate
Operating Temperature	0°C ~ 50°C	0°C ~ 40°C
Dimensions (H x W x D; cm)	179 x 195 x 35	110 x 88 x 40

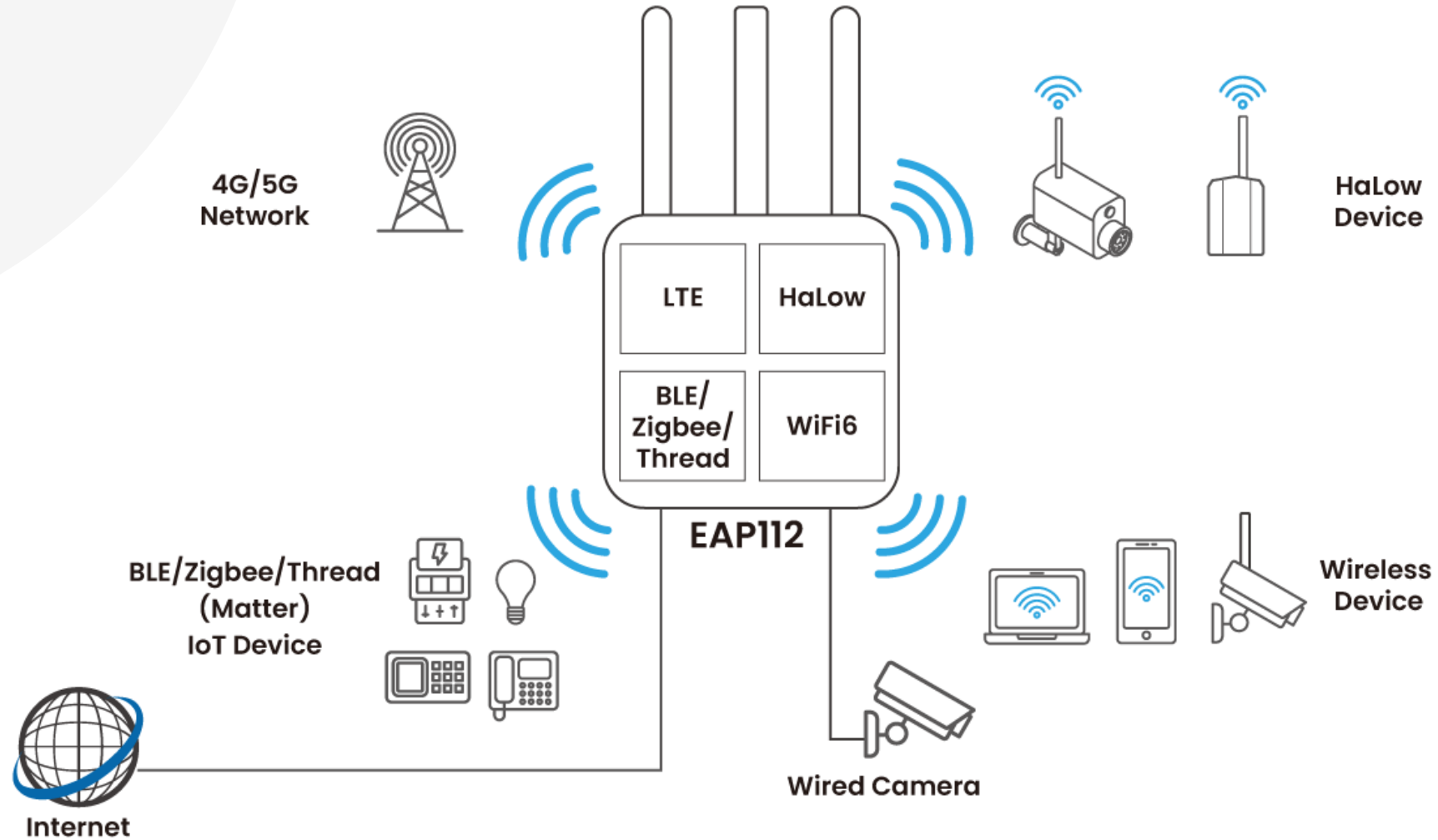


IoT Solution

- Cloud
 - Centralized management and integration with third-party applications
- Device
 - In-house devices and third-party peripherals
- Peripheral
 - Implementation points for IoT verticals



EAP112 IoT Gateway



Wi-Fi HaLow Camera

- Wi-Fi HaLow
- Power input
 - PoE
 - DC 12V
- Operating Temperature
 - -40°C to 50°C
- Casing
 - Bullet: IP66
- Dimension
 - Bullet: 164mm (L) x 80mm (W) x 80mm (H)
- Availability: Now



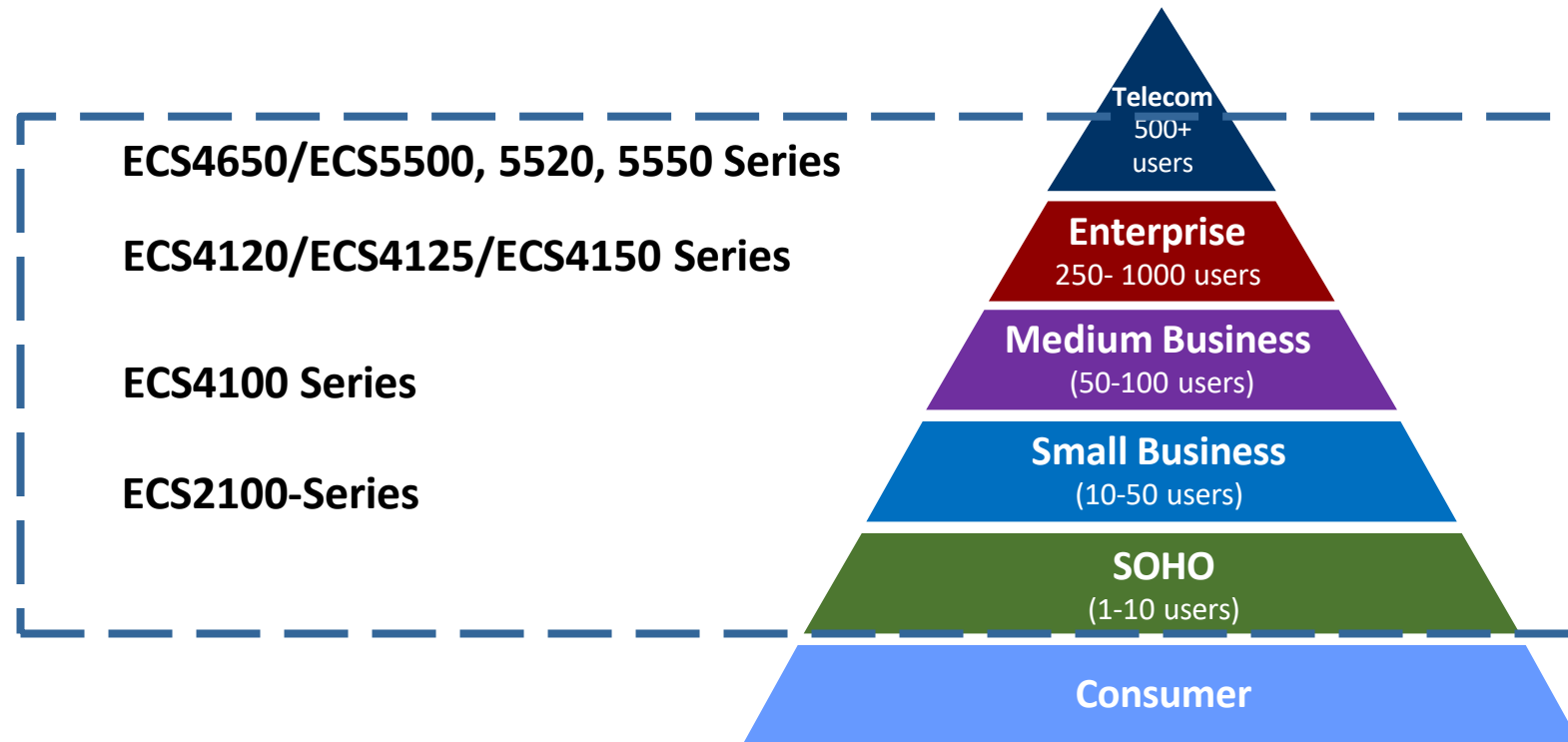
Bullet
Type

Enterprise Switch Solution



Enterprise & SMB Market

- Target Customers: Enterprise and SMB
- With option of PoE and non-PoE, offering advanced features such as IPv6, SNMP/CLI management and IEEE802.3az



Switch – ECS2100/4100 (1G Uplink)

ECS2100 Series (L2+)



ECS2100-10P

8 x 1G PoE (30W)
2 x 1G SFP
125W



ECS2100-28P

24 x 1G PoE (30W)
4 x 1G SFP
200W



ECS2100-10T

8 x 1G
2 x 1G SFP

ECS4100 Series (L2+)



ECS4100-52P

48 x 1G PoE (30W)
4 x 1G SFP
PoE 370W



ECS4100-52T

48 x 1G
4 x 1G SFP



ECS4100-12T

8 x 1G
2 x 1G Combo
2 x 1G SFP



Switch – ECS4150/4650 (10G Uplink)

ECS4150 Series (L2+, L3 Lite)



ECS4150-28P

24 x 1G PoE (30W)
4 x 10G SFP+
370W



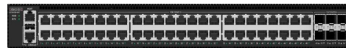
ECS4150-54P

48 x 1G PoE (30W)
8 x 1G PoE (90W)
6 x 25G SFP28
740W



ECS4150-28T

24 x 1GE
4 x 10G SFP+



ECS4150-54T

48 x 1G
6 x 25G SFP28

ECS4650 Series (L3)



ECS4650-54P (L3)

40 x 1G PoE (30W)
8 x 1G PoE (90W)
6 x 25G SFP28
740W



ECS4650-54T (L3)

48 x 1G
6 x 25G SFP28



Multi-Gigabit Switch (2.5G Downlink)

Now

Q4 2026

Now

Q3 2026

Now

Q3 2026



ECS4125-10P

Realtek (L2)
8 x 2.5G PoE (60W)
2 x 10G SFP+
240W



ECS4125-10T

Realtek (L2)
8 x 2.5G
2 x 10G SFP+



ECS4125-28P

Realtek (L2)
16 x 1G PoE
8 x 2.5G PoE (bt)
4 x 10G SFP+
380W



ECS4125-54P

Realtek (L2)
32 x 1G PoE
16 x 2.5G PoE (bt)
6 x 10G SFP+
800W



ECS4155-30P

Marvell (L2)
24 x 2.5G PoE (90W)
6 x 25G SFP28
750W



ECS4155-30T

Marvell (L2)
24 x 2.5G
6 x 25G SFP28



ECS4155-54P

Marvell (L2)
32 x 1G
16 x 2.5G PoE (90W)
6 x 25G SFP28
2 x PSU
750W



ECS4155-54T

Marvell (L2)
32 x 1G
16 x 2.5G
6 x 25G SFP28
2x PSU



ECS4655-30P

Marvell (L3)
24 x 2.5G PoE (90W)
6 x 25G SFP28
750W



ECS4655-30T

Marvell (L3)
24 x 2.5G
6 x 25G SFP28



ECS4655-54P

Marvell (L3)
32 x 1G PoE (30W)
16 x 2.5G PoE (90W)
6 x 25G SFP28
2 x PSU Slot
750W or 1500W



ECS4655-54T

Marvell (L3)
32 x 1G
16 x 2.5G
6 x 25G SFP28
2 x PSU



Multi-Gigabit Switch (10G Downlink)

Now



ECS5500-12P

Realtek (L2)
8 x 10G PoE (60W)
2 x 10G
2 x 10G SFP+
480W



ECS5520-18T

Marvell (L3)
16 x 10G
2 x 40G QSFP+



ECS5550-30X

Marvell (L3)
24 x 10G SFP+
6 x 100G QSFP28



ECS5500-12T

Realtek (L2)
8 x 10G
2 x 10G
2 x 10G SFP+



ECS5520-18X

Marvell (L3)
16 x 10G SFP+
2 x 40G QSFP+



ECS5550-54X

Marvell (L3)
48 x 10G SFP+
6 x 100G QSFP28

Plan



ECS5500-30P

Realtek (L2)
24 x 10G PoE (60W)
4 x 25G SFP28
2 x 100G QSFP28
1,440W



ECS5500-30T

Realtek (L2)
24 x 10G
4 x 25G SFP28
2 x 100G QSFP28



ECS2100, L2 with Comprehensive PoE Solution

- Fan-less design (ECS2100-10T/P)
- Up to 200W PoE (ECS2100-28P)
- Dual firmware/configuration
- L3 static routing
- PoE timer
- Intuitive Dashboard GUI
 - Web-based
 - Cloud-based (ecCLOUD/TIP)



ECS2100-10P
(8 GE PoE + 2 GE SFP)



ECS2100-10T
(8 GE+ 2 GE SFP)



ECS2100-28P
(24 GE PoE + 4 GE SFP)

Top Key Features & Benefit (ECS2100)

HW/SW Features	Benefits
Console Port	The ECS2100 series includes a serial console port. All switches support multiple management access through CLI/SNMP/Web/Telnet.
Diag LED	The ECS2100 Series includes a Diag LED to help check the switch status. When the switch boots, it runs a self-check. When the LED is on green, it means the operating status is normal .
PoE Total Solution	ECS2100-10P 125W (Fan-less) ECS2100-28PP 370W
Dual firmware / configuration	The ECS2100 series have 256MB RAM which it could save dual firmware/ configuration files to provide redundant and more security for users.
Dashboard	ECS2100 feature “Dashboard” , it provides several useful current switch status, like CPU, Memory utilization and Event & traffic status and so on. With those useful information, users could quickly overview and maintain the switch status
Plentiful features	The ECS2100 support L3 static routing / RIP / QinQ / mDNS / IP Clustering to increase user flexibility.
Comprehensive security	The ECS2100 Series supports multiple security features, such as ACLs, storm control, 802.1X, port security, MAC filters, IP source guard, and AAA.

ECS4100, L2+ Gigabit Access Switch for ISP/MSO

- Gigabit Access Switch
- 4 GE SFP
- QinQ, Selective QinQ
- Dying gasp
- EPRS, 802.1ag, Y.1731
- Static Route



ECS4100-52T
(48 GE +4 GE SFP)



ECS4100-52P
(48 GE PoE +4 GE SFP)



ECS4100-12T
(8 GE+ 2CG + 2 GE SFP)

Top Key Features & Benefit (ECS4100)

HW/SW Features	Benefits
Multi-management	The ECS4100 series includes a serial console port. All switches support multiple management access through CLI/SNMP/Web/Telnet/ecCLOUD
Diag LED	The ECS4100 Series includes a Diag LED to help check the switch status. When the switch boots, it runs a self-check. When the LED is on green, it means the operating status is normal .
PoE Total Solution	ECS4100-52P 370W
G.8032 Ethernet Ring Protection	The switch supports G.8032 Ethernet Ring Protection Switching with the ability for the network to detect and recover from incidents without impacting users (ECS4100-12PH,28TC,28P,52P)
Dashboard	ECS4100 feature “Dashboard” , it provides several useful current switch status, like CPU, Memory utilization and Event & traffic status and so on. With those useful information, users could quickly overview and maintain the switch status
IPv6 Support	The ECS4100 supports a number of IPv6 features, including IPv6 Management, DHCPv6 snooping with option 37, IPv6 Source Guard and MVR6.
Comprehensive security	The ECS4100 Series supports multiple security features, such as ACLs, storm control, 802.1X, port security, MAC filters, IP source guard, and AAA.

ECS4125-10P/10T L2+ 1/2.5G Multi-G 802.3bt PoE Switch

- 8 1/2.5G Base-T
- 2 10G SFP+ uplink port
- 802.3af/at/bt (60W) / per port
- 1 x RJ45 Console port
- 0-45 degree
- 12KB Jumbo Frame
- IPv4 / IPv6 Management
- IGMP /MLD Snooping
- Lite L3 (Static Routing / RIP)
- ERPS (< 50 msec convergence)
- CLI/ Web /SNMP / ecCLOUD Support / TIP OLS.



ECS4125-10P
(8 * 2.5G Base-T + 2 10G SFP+)



ECS4125-10T
(8 * 2.5G Base-T + 2 10G SFP+)

Top Key Features & Benefit (ECS4125-10P/10T)

HW/SW Features	Benefits
Multi-management	The ECS4125-10P includes a serial console port. All switches support multiple management access through CLI/SNMP/Web/Telnet/ecCLOUD
Multi-Gig Support	The ECS4125-10P delivers wire-speed switching performance on all 2.5 Gigabit ports, taking full advantage of existing high-performance 2.5 Gigabit 11ax Wi-Fi APs etc, significantly improving the responsiveness of applications and file transfer times.
PoE ++ (60W)	The ECS4125-10P can provide up to 60 W of power to attached devices with a total power budget of 240W. The switch can deliver up to 30 W on 8 ports, or 60 W on 4 ports.
G.8032 Ethernet Ring Protection	The switch supports G.8032 Ethernet Ring Protection Switching with the ability for the network to detect and recover from incidents without impacting users
Dashboard	The feature "Dashboard" , it provides several useful current switch status, like CPU, Memory utilization and Event & traffic status and so on. With those useful information, users could quickly overview and maintain the switch status
IPv6 Support	The ECS4125-10P supports a number of IPv6 features, including IPv6 Management, DHCPv6 snooping with option 37, IPv6 Source Guard and MVR6.
Comprehensive security	The ECS4125-10P supports multiple security features, such as ACLs, storm control, 802.1X, port security, MAC filters, IP source guard, and AAA.

ECS4150-28T/28P L2+ Gigabit Switch with 10G Uplinks



ECS4150-28T

- 24 10/100/1000 Base-T (RJ-45) ports, 4 10G SFP+ Uplink ports
- Fan-less & noiseless Design
- Fast Ring Recover Time <50ms (ERPS)
- L2/L2+ features
- 10KB Jumbo Frame
- 16K MAC Address
- Dying Gasp
- Management(CLI/WEB/SNMP/ecCLOUD/OLS)

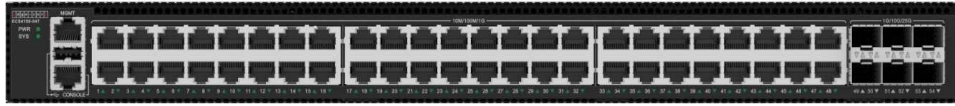


ECS4150-28P

- 24 10/100/1000 Base-T (RJ-45) ports with PoE support, 4 10G SFP+ Uplink ports
- 30 Watts PoE+ (IEEE 802.3af/at compliance)
- Fan-control Design
- Fast Ring Recover Time <50ms (ERPS)
- L2/L2+ features
- Dying Gasp
- Management(CLI/WEB/SNMP/ecCLOUD/OLS)

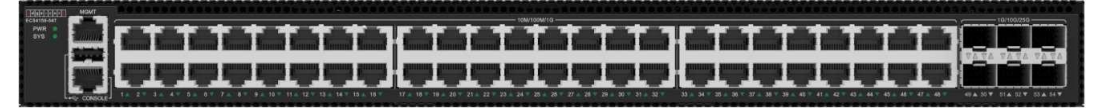
ECS4150-54T/54P L2+ Gigabit Switch with 25G Uplinks

740W



ECS4150-54T

- 48 10/100/1000 Base-T (RJ-45) ports, 6 25G SFP28 Uplink ports
- Fan-control Design
- Fast Ring Recover Time <50ms (ERPS)
- L2/L2+ features
- 10KB Jumbo Frame
- 32K MAC Address
- Dying Gasp
- Management(CLI/WEB/SNMP/ecCLOUD/OLS)



ECS4150-54P

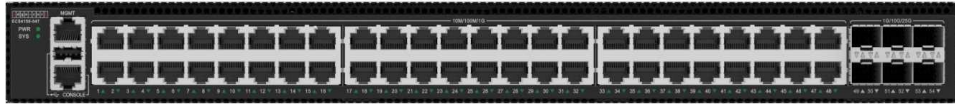
- 48 10/100/1000 Base-T (RJ-45) ports with PoE support, 6 25G SFP28 Uplink ports
- 90 Watts PoE+ (IEEE 802.3af/at/bt compliance)
- Fan-control Design
- Fast Ring Recover Time <50ms (ERPS)
- L2/L2+features
- Dying Gasp
- Management(CLI/WEB/SNMP/ecCLOUD/OLS)

Top Key Features & Benefit (ECS4150)

HW/SW Features	Benefits
Multi-management	The ECS4150 series includes a serial console port. All switches support multiple management access through CLI/SNMP/Web/Telnet/ecCLOUD
SFP+ and SFP28 Support	Support 4x10G SFP or 6x25G SFP28 uplink port to reduce bottlenecks and increasing the performance of the access network.
PoE Budget	ECS4150-28P, 370W; ECS4150-54P, 740W
G.8032 Ethernet Ring Protection	The switch supports G.8032 Ethernet Ring Protection Switching with the ability for the network to detect and recover from incidents without impacting users
Service Monitor & Management	The ECS4150 Series supports IEEE 802.1ag and ITU-T Y.1731, allowing service providers to monitor end-to-end services, identify connectivity and performance issues, and isolate problems from a remote location without dispatching an engineer onsite.
IPv6 Support	The ECS4150 Series supports a number of IPv6 features, including IPv6 Management, DHCPv6 snooping with option 37, IPv6 Source Guard and MVR6.
Comprehensive security	The ECS4150 Series supports multiple security features, such as ACLs, storm control, 802.1X, port security, MAC filters, IP source guard, and AAA.

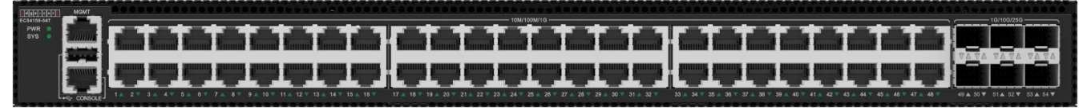
ECS4650-54T/54P L3 Gigabit Switch with 25G Uplinks

740W



ECS4650-54T

- 48 10/100/1000 Base-T (RJ-45) ports, 6 25G SFP28 Uplink ports
- Fan-control Design
- Fast Ring Recover Time <50ms (ERPS)
- L3 features (RIP/OSFP/BGP/VRRP)
- 32K MAC Address
- Management(CLI/WEB/SNMP/ecCLOUD/OLS)
- 6KV Surge Protection



ECS4650-54P

- 48 10/100/1000 Base-T (RJ-45) ports with PoE support, 6 25G SFP28 Uplink ports
- 90 Watts PoE+ (IEEE 802.3af/at/bt compliance)
- Fast Ring Recover Time <50ms (ERPS)
- L3 features (RIP/OSFP/BGP/VRRP)
- Management(CLI/WEB/SNMP/ecCLOUD/OLS)
- 6KV Surge Protection

ECS5520 Series L2+ 10G Access/Aggregation Switch

- 16 10G SFP+ or 16 10GBaseT
- 2 40G QSFP+ uplinks
- Support 2 40G to 4 10G SFP+ breakout cable
- 1RJ45 Console port
- 1 Management port
- 2 Power Supply (AC, 48V DC), Hot Swappable
 - 2 x AC, 2 x DC , 1 x AC + 1 x DC
- 2+1 FAN
- MLAG
- QinQ, Selective QinQ
- ERPS, 802.1ag, Y.1731
- Dying gasp
- DDM
- Static Route



ECS5520-18X
(16 10G SFP+ + 2 40G QSFP+)



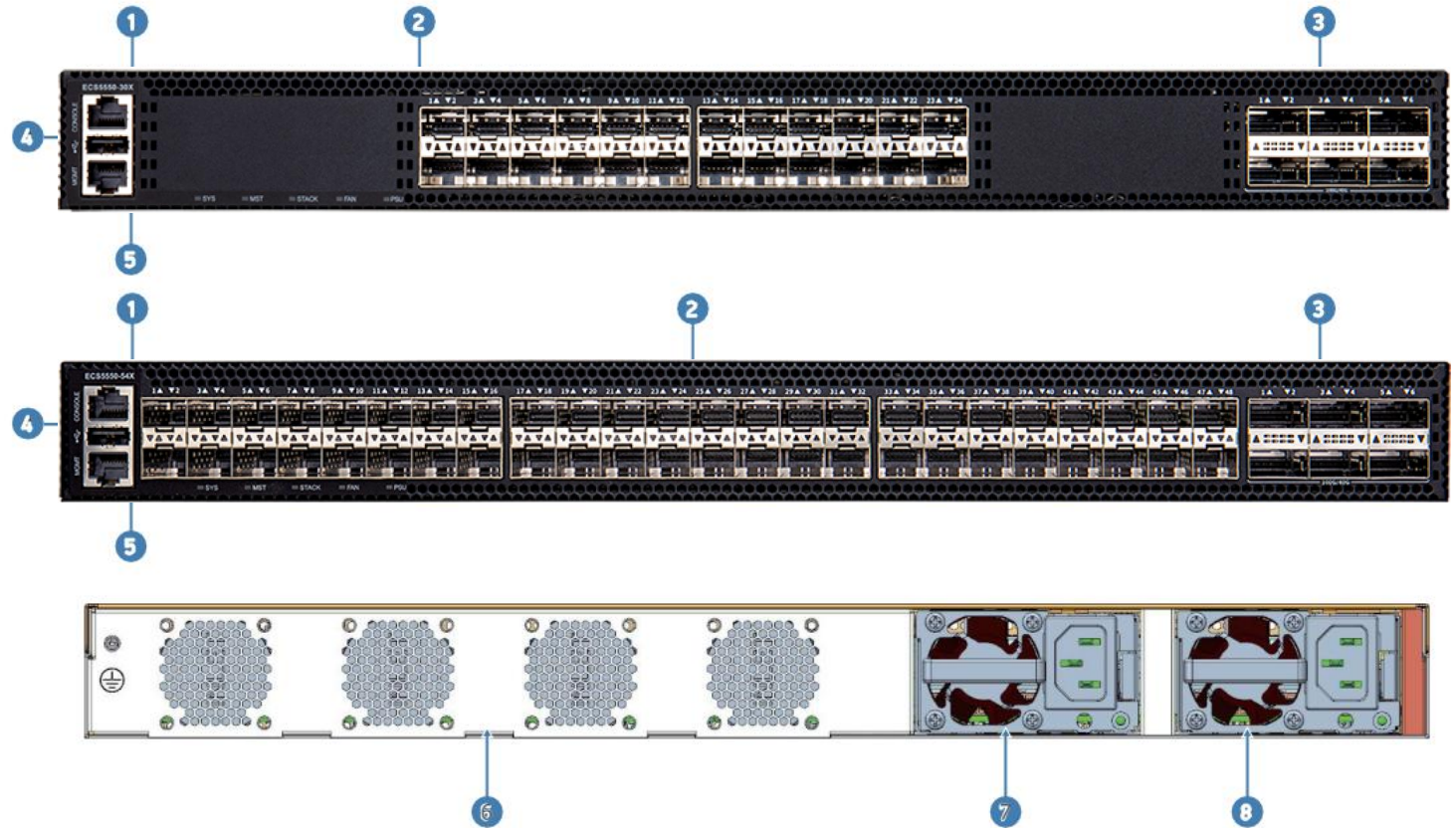
ECS5520-18T
(16 10GBaseT + 2 40G QSFP+)

Top Key Features & Benefit (ECS5520)

HW/SW Features	Benefits
Multi-management	The ECS5520 series includes a serial console port. All switches support multiple management access through CLI/SNMP/Web/Telnet/ecCLOUD
40 QSFP+ Support	The Edgecore ECS5520-18X/ECS5520-18T is a high-performance 10 Gigabit Ethernet Layer 2+/Lite L3 managed switch with 480 Gbps switching capacity with two built-in 40G QSFP+ ports uplink
AC/DC Power Supply	2 PSU Slot (Hot Swappable) AC power supply module (100 to 240 VAC, 50/60 Hz) DC power supply module (-36 to -72 VDC)
G.8032 Ethernet Ring Protection	The switch supports G.8032 Ethernet Ring Protection Switching with the ability for the network to detect and recover from incidents without impacting users
Service Monitor & Management	The ECS5520 Series supports IEEE 802.1ag and ITU-T Y.1731, allowing service providers to monitor end-to-end services, identify connectivity and performance issues, and isolate problems from a remote location without dispatching an engineer onsite.
IPv6 Support	The ECS5520 supports a number of IPv6 features, including IPv6 Management, DHCPv6 snooping with option 37, IPv6 Source Guard and MVR6.
Comprehensive security	The ECS5520 Series supports multiple security features, such as ACLs, storm control, 802.1X, port security, MAC filters, IP source guard, and AAA.

ECS5550-30X/54X Full L3 Aggregation Switch

- 24/48 1G/2.5G/5G/10G SFP+
- 6 100G QSFP28 uplinks
- 1 RJ45 Console port
- 1 GE Out of Band Management port
- Stacking: 3 units.
- 1 USB 2.0 type A
- Dual AC power supply
- DDM 3+1
- Dying gasp
- Operating Temp -5°C-45°C



Description

- | | |
|---|--------------------------|
| 1. RJ-45 console port | 5. RJ-45 management port |
| 2. 24 x 10G SFP+ ports (ECS5550-30X)
48 x 10G SFP+ ports (ECS5550-54X) | 6. 3+1 fans |
| 3. 6 x 100G QSFP28 ports | 7. AC PSU 1 |
| 4. USB management port | 8. AC PSU 2 |

Edgecore L2/L3 Switch Feature List

Layer 2/2+

- Link Aggregation, LACP
- VLAN/VLAN Trunking
- MLAG
- QinQ
- Selective QinQ
- Storm Control
- STP, MSTP, RSTP
- Traffic Segmentation
- Ingress Filtering
- Jumbo Frame
- IGMP Snooping(V1,V2,V3)
- MLD Snooping (V1,V2)
- MVR
- Loopback Detection
- ERPS(V2)
- Flow control
- L2 Protocol Tunneling (CDP,PVST,STP,LLDP)

Layer 3 (on L3 switch models)

- BGP4+(Ipv4)
- RIP v1/v2(Ipv4),RIPng(Ipv6)
- OSPF(Ipv4), OSPFv3(Ipv6)
- DHCP Relay Agent (IPv4)
- Static Route
- ECMP
- PIM
- IGMP v1/v2/v3
- MLD v1/v2
- VRRP(Ipv4)

Security

- IPv4/IPv6ACL(L2/L3/L4)
- Ingress/Egress ACL
- ACL Statistics
- TACACS+,Radius
- AAA with TACACS/Radius
- 802.1x (authentication), 802.1x Supplicant support
- Management Interface Access Filtering (SNMP, WEB, TELNET)
- SSH V2.0 (Secured Telnet Session)
- Software License

QoS

- CoS / DSCP
- Scheduling for priority queues
- Port Rate Limit
- DiffServ
- Voice VLAN

System Management

- SNMP, SNMP Trap
- Syslog
- sFlow (V4/V5)
- NTP
- Telnet Client, Telnet server
- RMON
- DNS
- LLDP
- OAM(IEEE 802.3ah), CFM(IEEE 802.1ag, Y.1731)
- DHCP Client, DHCP server
- DHCP snooping, DHCP snooping Option82
- IP Source Guard
- Port Mirroring, VLAN Mirror, ACL Mirror, Mac Based Mirror

SD-WAN



SD-WAN Solution



- Edgecore's SD-WAN solution is to address those network issues and able to provide robust, secure, adaptive network services on demand. By enhancing or substituting the traditional branch networking devices with virtualization appliances that can be programmed to understand the nature of traffic it is handling and dynamically adjust accordingly, latency-sensitive traffic for applications such as video and voice, need to be continuously monitored and prioritized, which requires such things as application recognition, traffic re-routing, load-balancing, bandwidth- control, automation fail-over, that MPLS connections simply cannot provide.

- Central Management
- Multi-Tenant
- Traffic Path Assignment
- Adaptive WAN Selection
- Network Quality Assurance
- Deep Packet Analysis
- Zero Touch Deployment
- Bandwidth Control
- Container Management



SD-WAN



Model Number	SDW100	SDW101	SDW102	SDW102-L
WAN Ports	2 x GbE or 2 x SFP	2-port 10GbE SFP+ (or 1GbE SFP)	2-port GbE SFP+ (or 2-port SFP)	2-port GbE SFP+ (or 2-port SFP)
LAN Ports	8 x GbE	8-port GbE (RJ-45), 2-port 10GbE	4-port GbE	4-port GbE / 4G Cat6 LTE
Other Ports	Console: 1 x RJ-45 USB ports: 1 x USB 3.0	Console: 1 x RJ-45 USB ports: 1 x USB 3.0	Console: 1 x RJ-45 USB ports: 2 x USB 3.0	Console: 1 x RJ-45 USB ports: 2 x USB 3.0
Bandwidth	Tunnel capability: up to 500Mbps. Throughput per tunnel: up to 300Mbps.	Tunnel capability: up to 1000Mbps. Throughput per tunnel: up to 320Mbps.	Tunnel Capability: up to 300 Mbps. Throughput per Tunnel: up to 180 Mbps.	Tunnel Capability: up to 300 Mbps. Throughput per Tunnel: up to 180 Mbps.
Concurrent Users	500	1000	100	100
Management	x86 Appliance-based Cloud Platform	x86 Appliance-based Cloud Platform	x86 Appliance-based Cloud Platform Edgecore ecCLOUD (2023, H1)	x86 Appliance-based Cloud Platform Edgecore ecCLOUD (2023, H1)
Operating Temperature	0°C (32°F) to 40°C (104°F)	0°C (32°F) ~ 40°C (104°F)	0°C (32°F) to 40°C (104°F)	0°C (32°F) to 40°C (104°F)
Dimensions (H x W x D; cm)	42.6 x 27.0 x 4.4	44.2 x 29.85 x 4.36	23 x 17.6 x 4.4	23 x 17.6 x 4.4
Weight	2.64 kg	3.08 kg	0.67 kg	0.67 kg



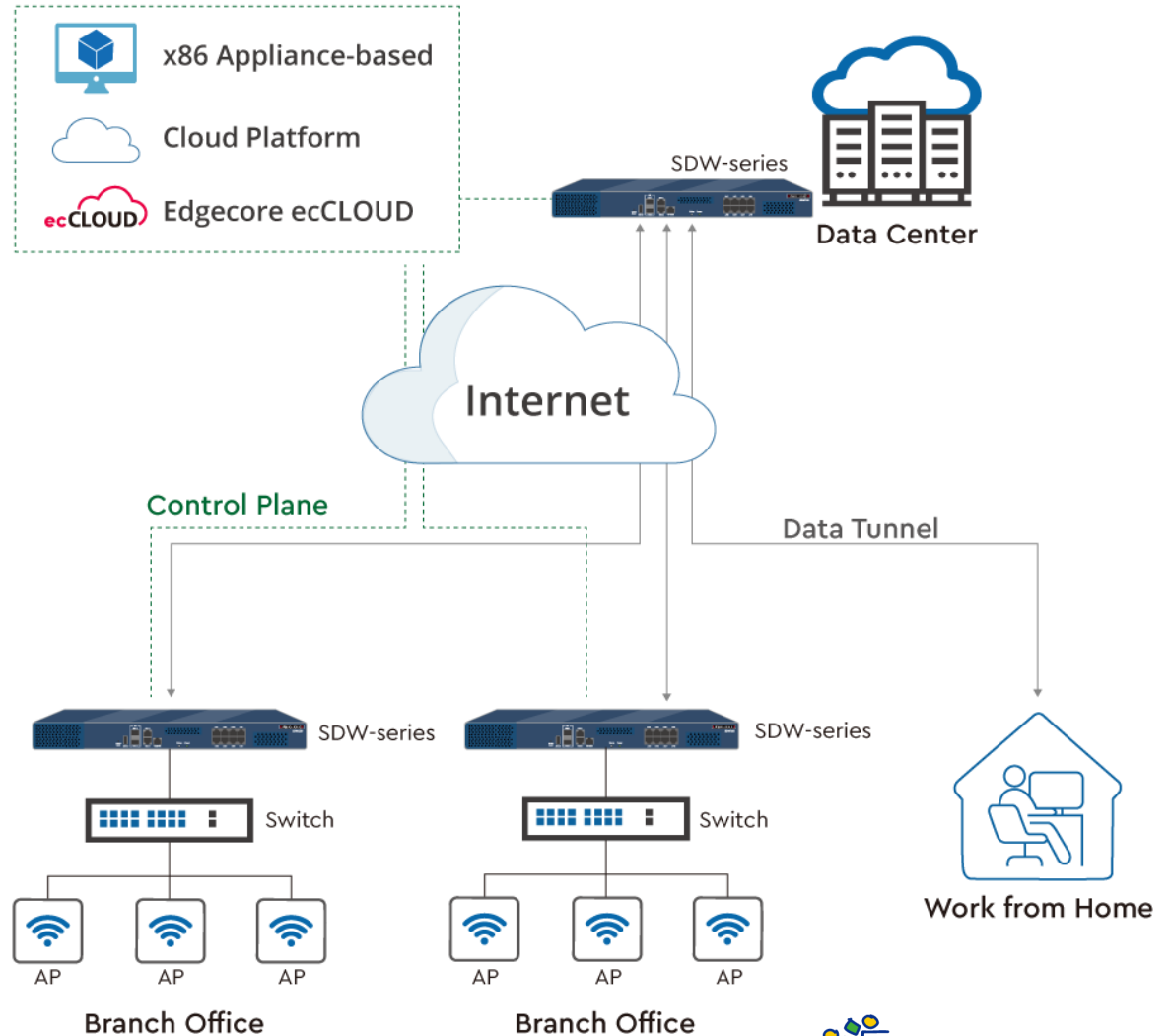
SD-WAN Controller



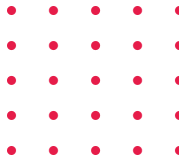
SD-WAN Controller – Barrista

- VM in x86 appliance based
- VM in cloud platform
- Edgecore ecCLOUD

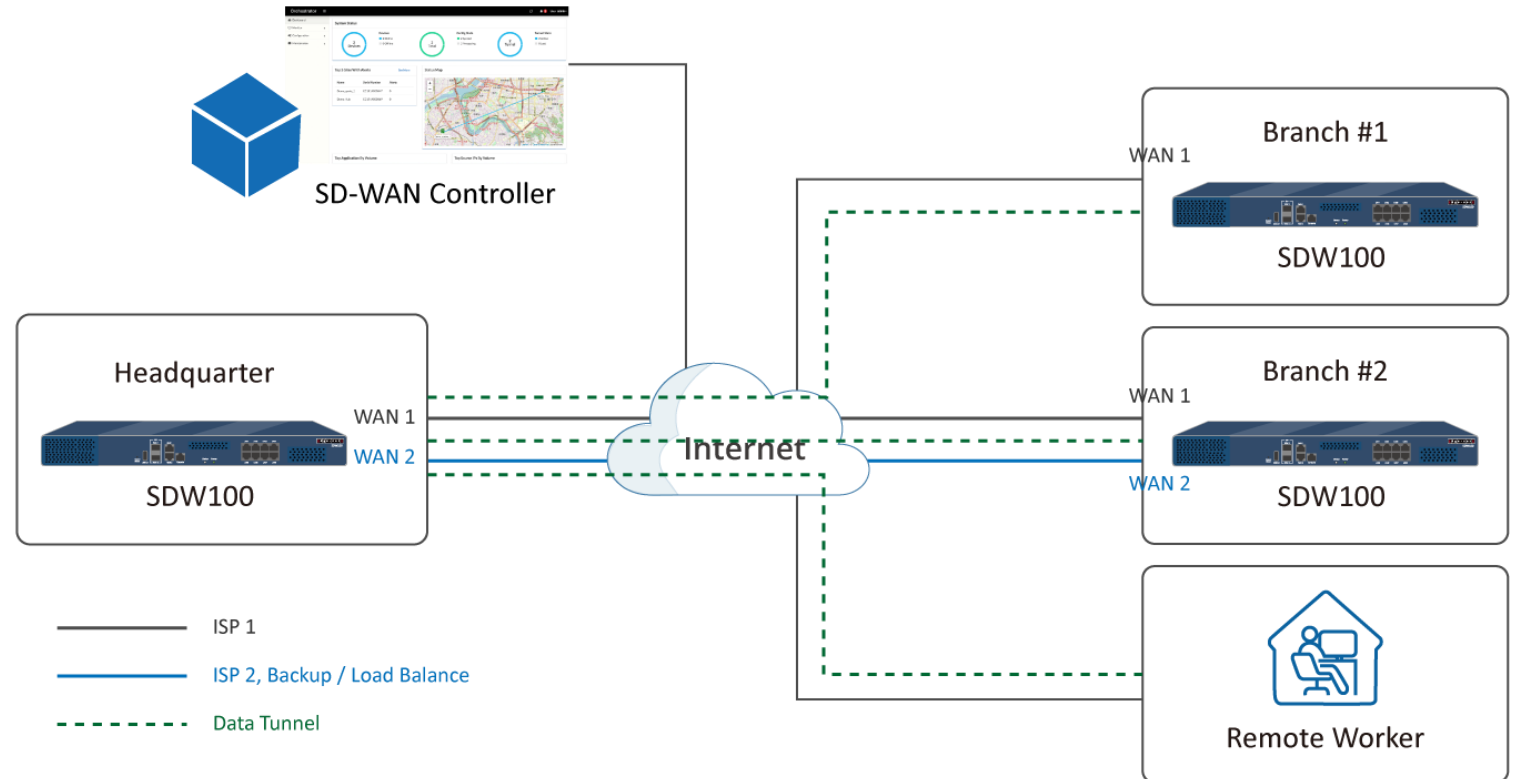
SD-WAN Orchestrator (Barrista) Options



Leased Line MPLS Replacement for HQ-Branches Offices



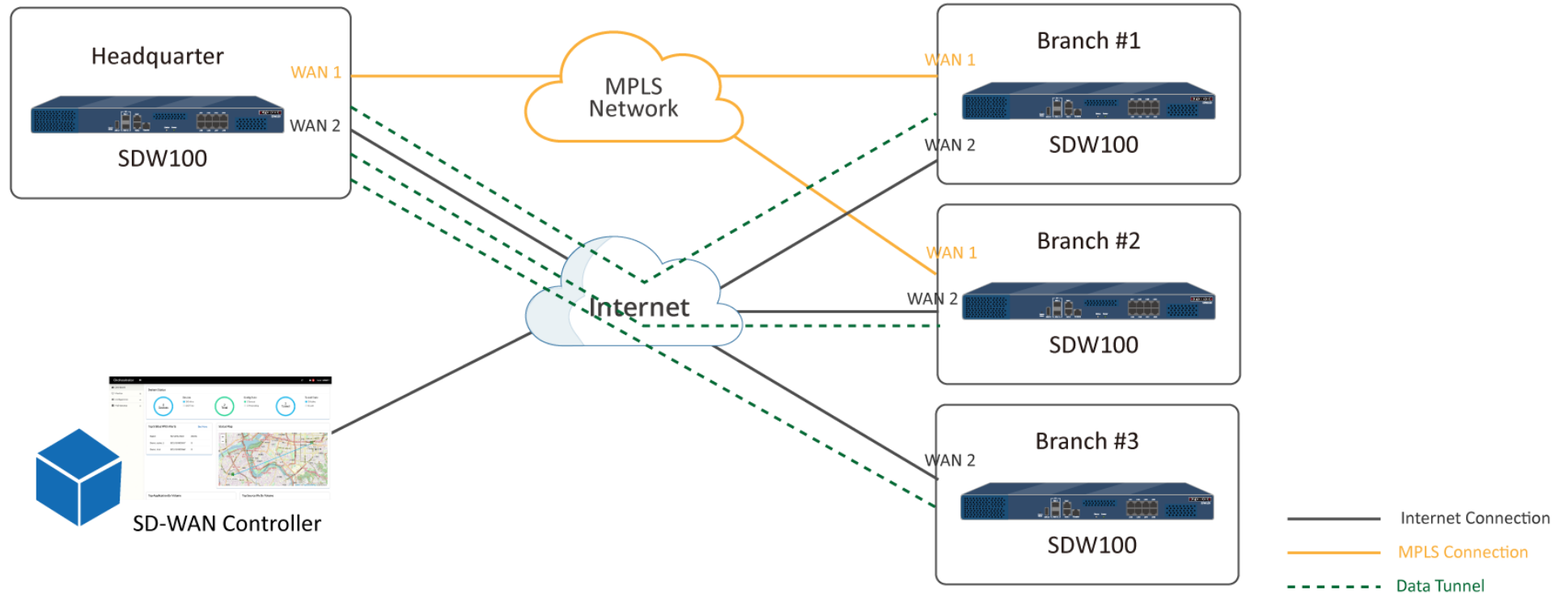
- Internet VPN
- No lease line (MPLS)
- Central Management
- Zero Touch Provision
- Dual ISPs for backup and Internet load balance
- OTA Firmware Upgrade
- QoS Bandwidth Control
- Users Packet Analysis
- Firewall features
- ACL Security
- WAN optimize
- SaaS optimize



Flexible Routes Application

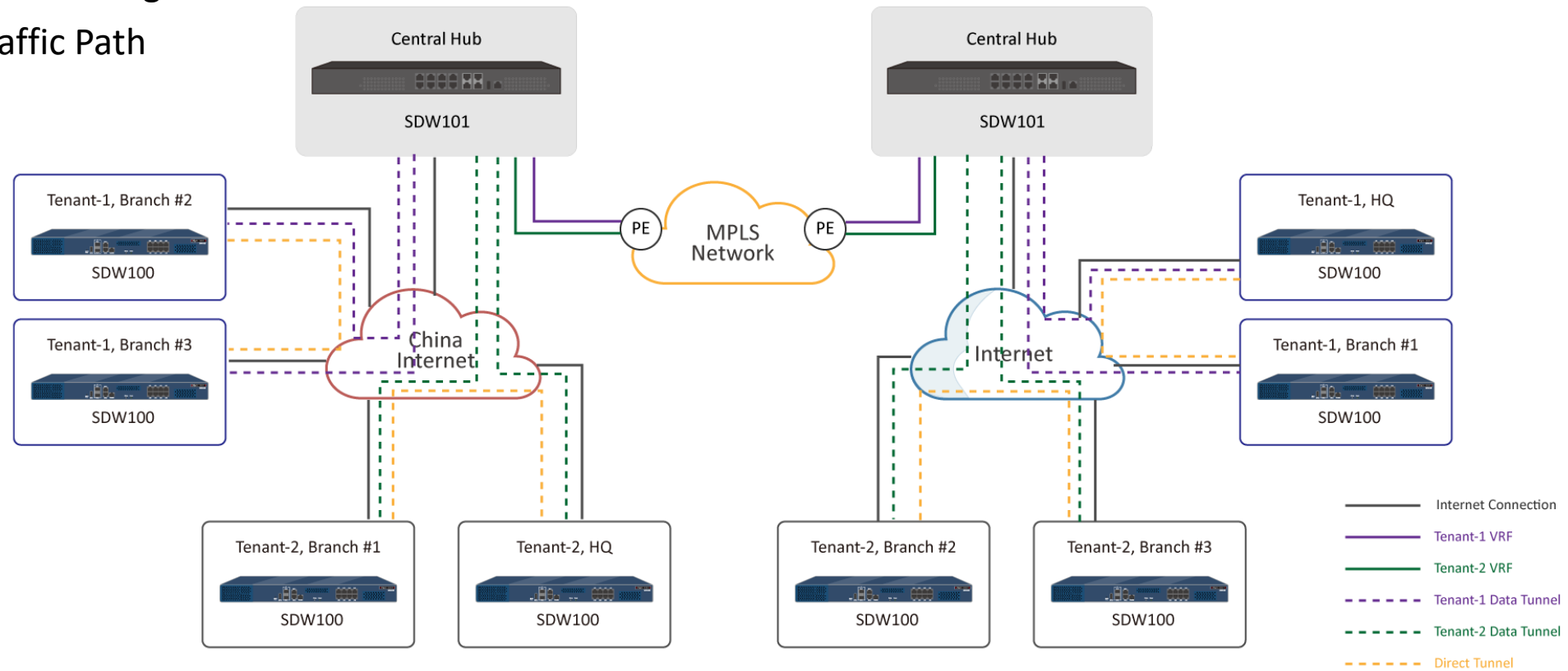


- Internet VPN + MPLS
- MPLS connection backup by Internet VPN
- Traffic steering (ex: POS System by MPLS, others service by Internet VPN)



MSP Application

- Multi-Tenant Account Management
- Quick Deploy
- Dynamic Routing
- Best Traffic Path



Remote Worker Application



- Provide remote worker feature, users can login VPN in PC within only 4 steps setup

1. Add New User

2. Download ovpn file


3. Import ovpn file in Users PC

4. Ready





THANK YOU

 www.edge-core.com

 [Edgecore-Networks](https://www.facebook.com/Edgecore-Networks)

 [Edgecore-Networks Corporation](https://www.linkedin.com/company/Edgecore-Networks-Corporation)

 sales@edge-core.com

 [EdgecoreNetworks Marcom](https://www.youtube.com/EdgecoreNetworks)

 [@EdgecoreNetwork](https://twitter.com/EdgecoreNetwork)



Successful Cases



Accton
Making Partnership Work



Smart Learning



- To provide English learning lessons to the rural areas, the Education Bureau of Kaohsiung City Government has invested in the creation of "Kaohsiung English Van", which breaks geographical restrictions and provides mobile teaching services in rural areas.
- Edgecore OAP100 provide 4G LTE Uplink and PtP bridging up to 3 km, ECW5410-L as an in-vehicle wireless AP to provide local Wi-Fi access and using ecCLOUD controller to manage and monitor all devices.



Figure 1: The OAP100 using 4G LTE module is installed on the car, and its mounting bracket can be adjusted according to the connection requirements.

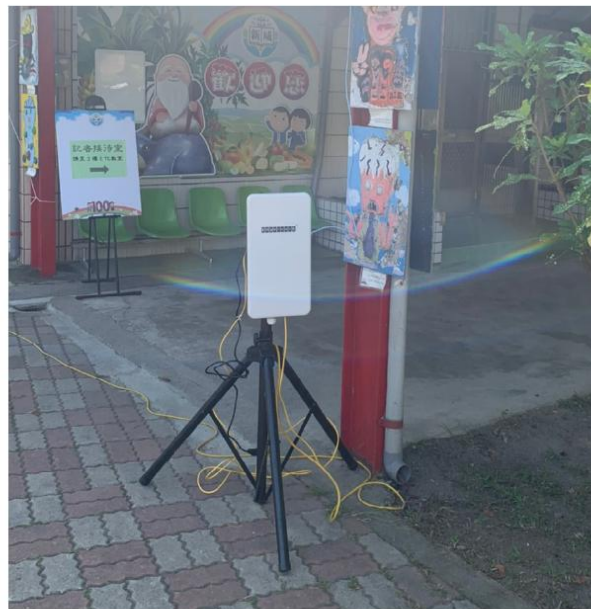


Figure 2: OAP100 is installed on a tripod and placed in the campus to establish a point-to-point bridge with the OAP100 installed on the car.

- Customer:

- Education Bureau of Kaohsiung City Government, Taiwan

- Products Deployed:

- ecCLOUD Cloud Controller
- OAP100 Outdoor AP with LTE
- ECW5410-L Indoor AP
- ECS2100-10P Gigabit PoE Switch



Accton
Making Partnership Work



RT-Mart



- RT-Mart, a hypermarket chain in Taiwan, through cooperation with Edgecore Networks, has deployed a wireless centralized management solution for their network structure of 20 retail branches across Taiwan, which enables them to grow and expand the scale continuously in the retail market.
- Edgecore has also completed the implementation of RT-Mart's mobile inventory and self-checkout system. The ecCLOUD solution manages more than 600 wireless and wired devices, meeting RT-Mart's rapid network deployment and powerful centralized management, as well as maximizing labor efficiency.



- Customer:
 - RT-Mart, Taiwan
- Products Deployed:
 - ecCLOUD Cloud Controller
 - Spark AC Wave 2 Indoor AP
 - SunSpot Indoor AP



Accton
Making Partnership Work



TLDC Paradiso Mall



- TLDC Paradiso contains a shopping mall, art village, and medical cosmetic clinic that needed a stable and high-availability network plan to take the backbone fiber network to edge facilities.
- The new network deployment used Edgecore high-performance enterprise switches together with enterprise-grade indoor access points. Equipped with powerful features, the Edgecore switches and access points fully comply with network infrastructure standards, as well as meet the TLDC requirements.



- Customer:
 - TLDC Paradiso Mall, Taiwan
- Products Deployed:
 - ecCLOUD Cloud Controller
 - Spark 2 AC1200 Wave 2 AP
 - MetroLinq 2.5G 60 PTP
 - ECS4120 series switch
 - ECS2100 series switch



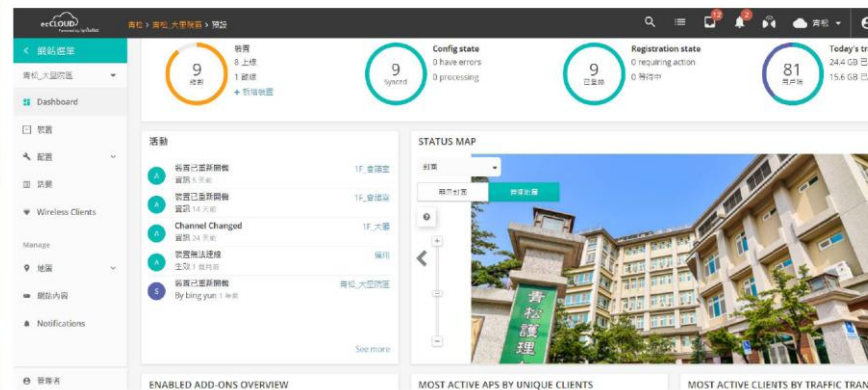
Qing Song Health Care Center



- The new network deployment used Edgework high-performance enterprise switches together with a WLAN gateway controller and enterprise-grade indoor access points. Equipped with powerful features, the Edgework switches and access points fully comply with the standards of the network infrastructure system, as well as meet the actual requirements.
- Deploying the new network solution helped Qing Song Health Care Center to save manpower managing and maintaining the complex technologies, which increased the staff efficiency and productivity, and therefore improved the quality of patient care



大里青松護理之家



- Customer:
 - Qing Song Health Care Center, Taiwan
- Products Deployed:
 - EWS5203 WLAN Gateway-controller
 - ecCLOUD cloud controller
 - Spark AC Wave2 Indoor AP
 - ECS2100-28PP PoE Switch
 - ECS2100-10T Switch



Accton
Making Partnership Work

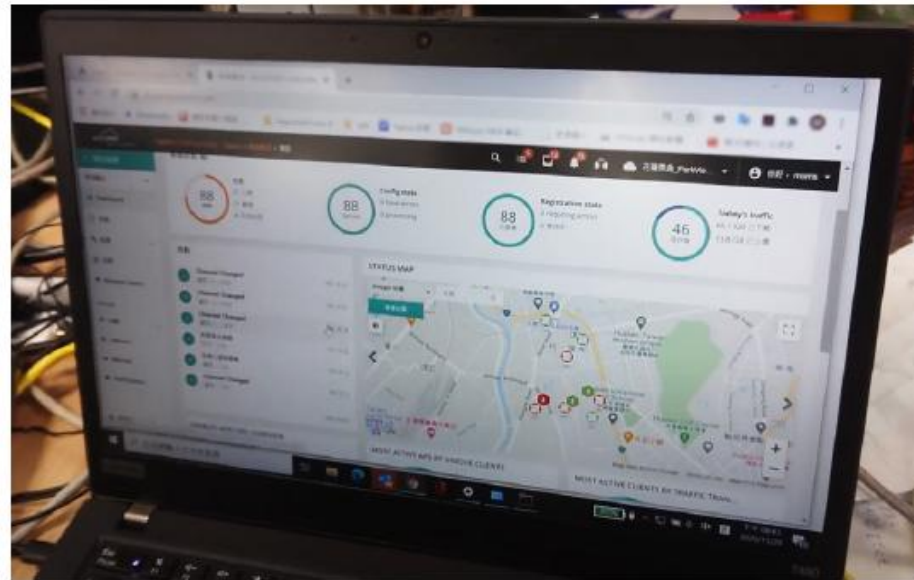


ParkView Hotels & Resorts



- The Edgecore SunSpot AC Wave2 solution met the hotel’s application requirements, providing Power over Ethernet (PoE) options that enabled APs to be deployed without being limited by the location of power sockets, and making deployment more flexible. In addition, the Edgecore ecCLOUD system provides unified visibility and control over all wired and wireless devices, simplifying deployment and management, increasing efficiency, and lowering labor costs.

PARKVIEW
HOTELS & RESORTS™
美侖大飯店



- Customer:
 - ParkView Hotels & Resorts, Taiwan
- Products Deployed:
 - ecCLOUD Cloud Controller
 - SunSpot AC Wave 2 Indoor AP



New Taipei City Markets



- The New Taipei City Government Marketing Department aims to promote its wet markets and improve the shopping environment by providing customers with a safe, clean, and comfortable shopping experience.
- Edgecore has successfully completed the network deployment of 43 markets in New Taipei City. With Edgecore ECW5211-L indoor access points, both vendors and customers can enjoy free and smooth Wi-Fi services.



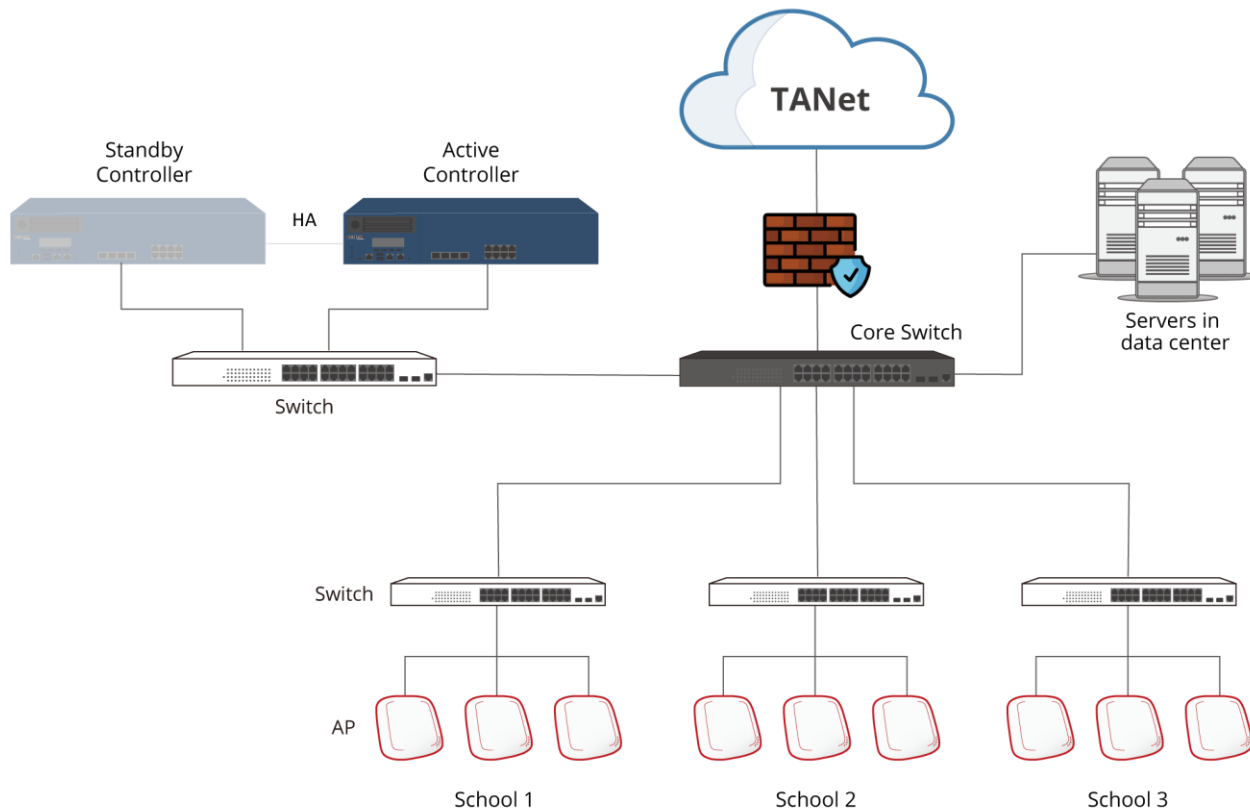
- Customer:
 - New Taipei City Markets, Taiwan
- Products Deployed:
 - ECW5211-L Indoor AP



Campus WiFi in Taiwan



- EWS Controllers were deployed in the data center with 1+1 HA support and over 7,000 APs were deployed at 275 schools, providing reliable and scalable Wi-Fi for e-learning



- Customer:
 - Education, Taiwan
- Products Deployed:
 - EWS Controller
 - ECW Indoor AP
 - LTE AP
 - ECWO Outdoor AP
 - PoE Switch



Accton
Making Partnership Work



Campus WiFi in Turkey

- 92,000 units of indoor AP and 4,026 wireless controller units mass deployed in 4,000 high schools throughout Turkey.
- The project started in 2012 with a pilot phase and a plan to finish all installation in different phases across 81 provinces in 5 years.

fatih
EĞİTİMDE GELECEĞE AÇILAN KAPI

BASIN DUYURUSU



- Project Customer:
 - Turkish government- Smart Class Project, Turkey
- Products Deployed:
 - EWS Controller
 - ECW Indoor AP



Accton
Making Partnership Work

Edge-core
NETWORKS

In Vitro Clinic



- Considering solutions designed and implemented for LAN L2+ networks, Edgecore equipment was selected to deploy for this project. The new network deployment used a total of 27 Edgecore high-performance enterprise switches, including the core switches, aggregation switches, and access switches. Plus one WLAN gateway-controller with 58 indoor access points.



- Project Customer:
 - In Vitro Clinic in Georgia
- Products Deployed:
 - EWS Controller
 - ECS Enterprise Switch
 - ECW Indoor AP

ISP – Public WiFi in Philippine



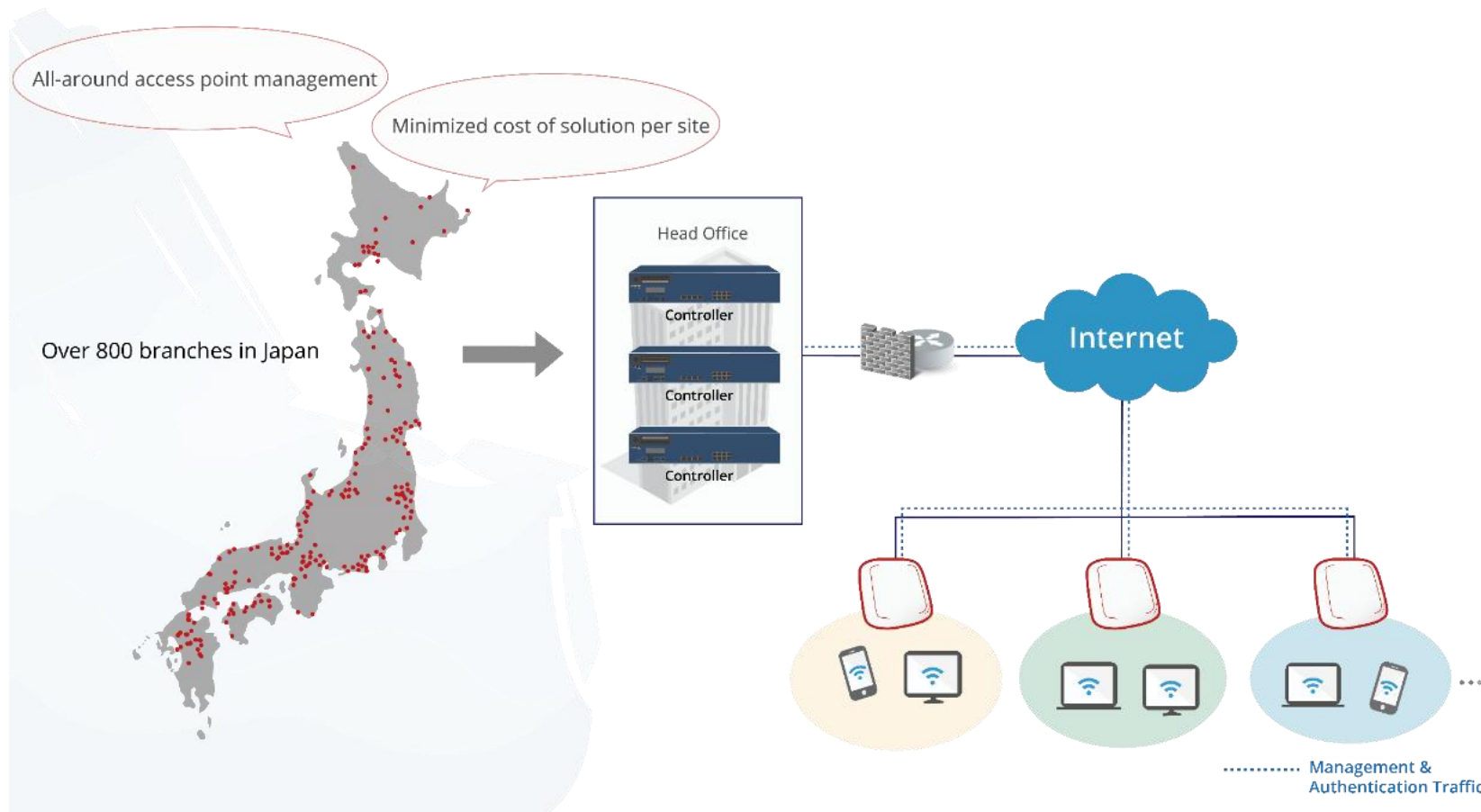
500
wit

- Project Customer:
 - ISP, Philippine
- Products Deployed:
 - EWS Controller 4pcs
 - ECW Indoor AP, 50ppcs
 - ECWO Outdoor AP, 2000pcs
 - PoE Switch, 2000pcs

Retail Chain Store WiFi in Japan



- EWS Controllers were deployed at the headquarter and 2,800 APs were deployed at over 800 branches to provide Wi-Fi service. The administrators are able to centrally and remotely manage APs from the data center.



- Project Customer:
 - Chain Store, Japan
- Products Deployed:
 - EWS Controller
 - ECW Indoor AP

Tourist Attractions & Night Markets



- Deployed in several night markets in Taiwan. With the walled gardens functionality, tourists can link to the night markets' official websites before authentication. In addition, with the service zone functionality, network service providers can define different access policies ensuring the overall network performance. Furthermore, service providers can also offer location-based advertising for stalls on portal



- Customer:
 - Night Market, Taiwan
- Products Deployed:
 - EWS Controller
 - ECW Indoor AP



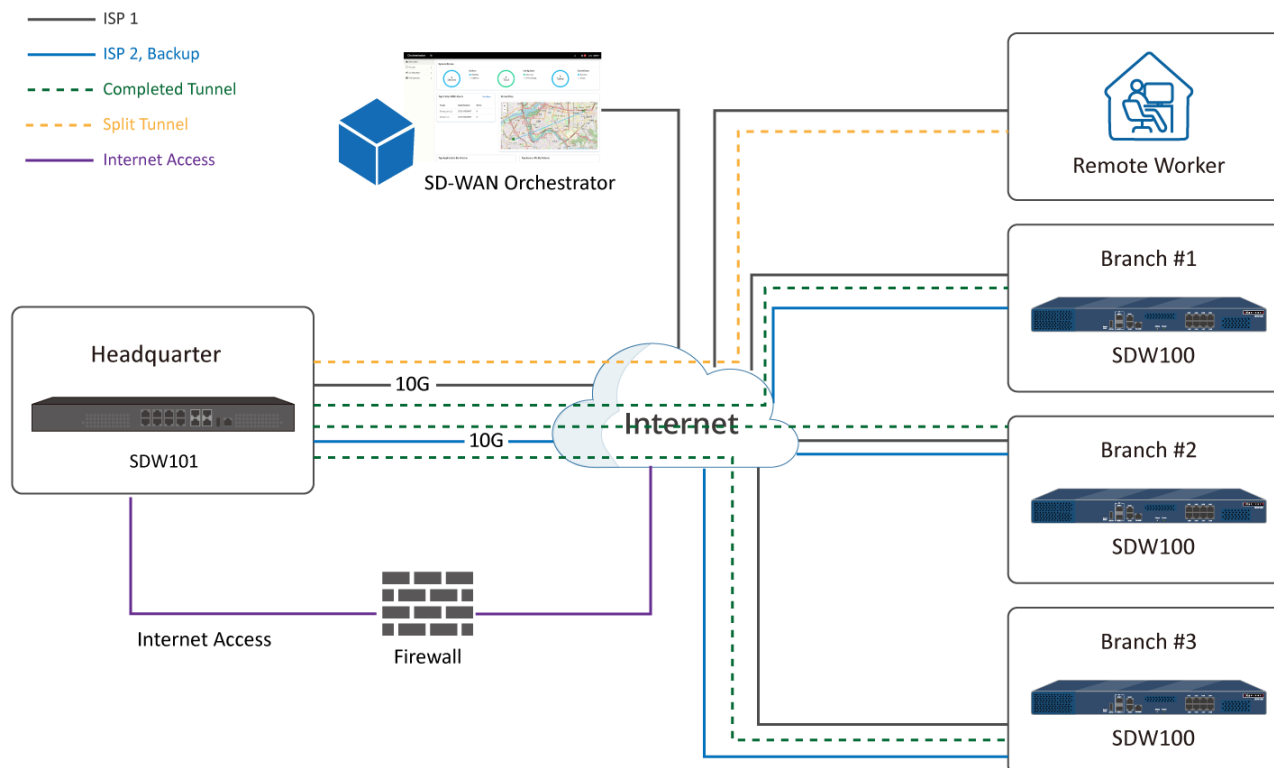
Accton
Making Partnership Work



Enterprise in Philippine



- In order to support work from home remotely, customer need to get the solution with dual WANs with completed & split tunnel to make sure the security of network.
- SDW101 offers WFH function & get all data packets and go through the central firewall for external Internet and provide dual WAN backup.



- Main Features:

- Completed & split tunnel
- Work form home solution
- Different ISP for backup and Internet load balance
- Internet VPN
- Without MPLS


- Products Deployed:

- SD-WAN Orchestrator
- SDW100
- SDW101
- User mode: Work from home





THANK YOU

 www.edge-core.com

 [Edgecore-Networks](#)

 [Edgecore-Networks Corporation](#)

 sales@edge-core.com

 [EdgecoreNetworks Marcom](#)

 [@EdgecoreNetwork](#)